



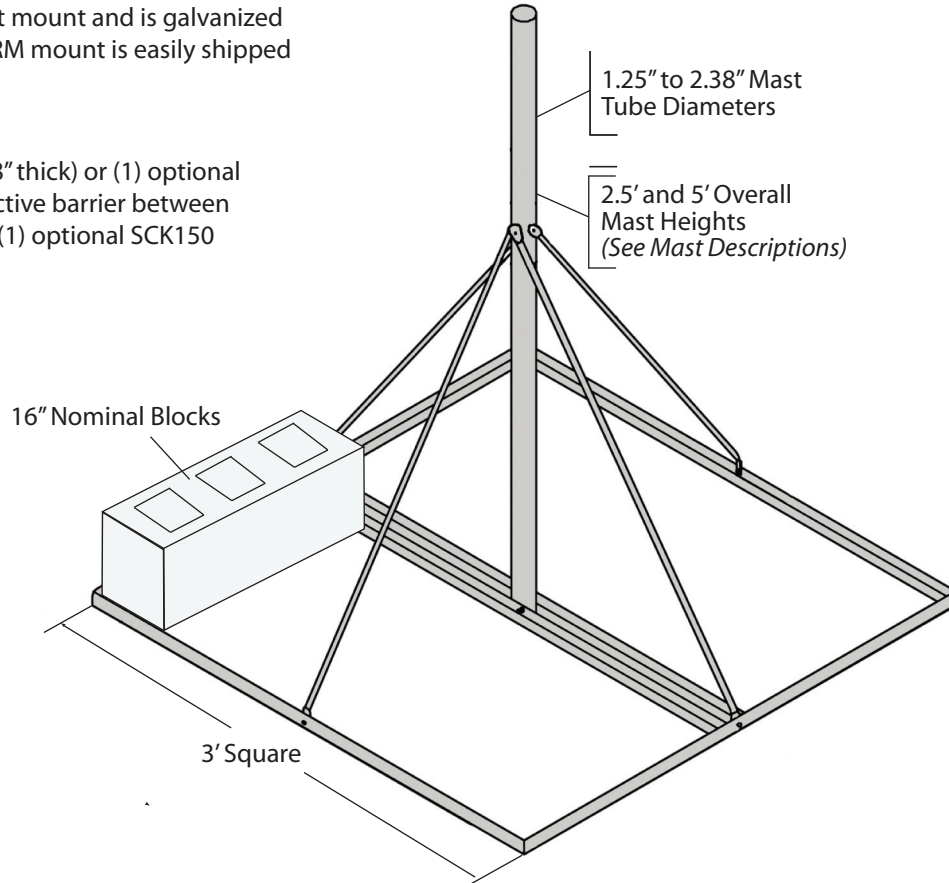
# FRM NON-PENETRATING



CLICK HERE TO SEE PRICE & ORDER ONLINE

The FRM mount is a lightweight mount and is galvanized for corrosion protection. The FRM mount is easily shipped via UPS.

Order (1) optional FRMMAT (1/8" thick) or (1) optional FRMPAD (3/8" thick) for a protective barrier between the mount and the roof. Order (1) optional SCK150 safety cable kit (3/8" x 150').



### MAST SPECIFICATIONS

Mount Part No.	Mast Part No.	Mast Description & Height
FRM125	FY202	1.25" O.D. x 16 GA. x 5.0' (PG)
FRM150	FY203	1.50" O.D. x 16 GA. x 2.5' (PG)
FRM166	FY204	1.66" O.D. x 16 GA. x 2.5' (PG)
FRM238	FY205	2.38" O.D. x 0.154" wall x 2.5' (HDG)
FRM225	FY205SP	2.25" O.D. x 14 GA. x 5.0' (HDG)
FRM238SP5	FY253	2.38" O.D. x 0.154" wall x 5.0' (HDG)

PG = Pre-galvanized mast  
HDG = Hot-dip galvanized mast

### FRM BALLAST REQUIREMENTS

Effective Projected Area (EPA) (FT <sup>2</sup> )	Ballast (LBS)	Zero Velocity Load (PSF)	Vs (MPH)	Vmax at centroid of projected area, (MPH)			
				h=2 FT	h=3 FT	h=4 FT	h=5 FT
2	100	12	140	135	110	96	85
	200	24	198	188	153	133	119
	300	36	242	222	182	157 (154)	141 (131)
	400	48	280	269	219 (197)	190 (154)	170 (131)
4	100	12	99	96	78	68	60
	200	24	140	133	108	94	84
	300	36	171	157	129	111	99 (93)
	400	48	198	190	155 (139)	134 (109)	120 (93)
6	100	12	81	78	64	55	49
	200	24	114	108	88	77	68
	300	36	140	128	105	91 (89)	81 (76)
	400	48	161	155	127 (114)	110 (89)	98 (76)

**h** = Distance from support surface to centroid of EPA.

**Vs** = Effective wind velocity resulting in sliding on a flat surface with a .50 coefficient of friction.

**Vmax** = Effective wind velocity based on strength or overturning.

NOTE: The velocities in ( ) apply to the FRM125 mount when the strength of the FRM125 mast governs.